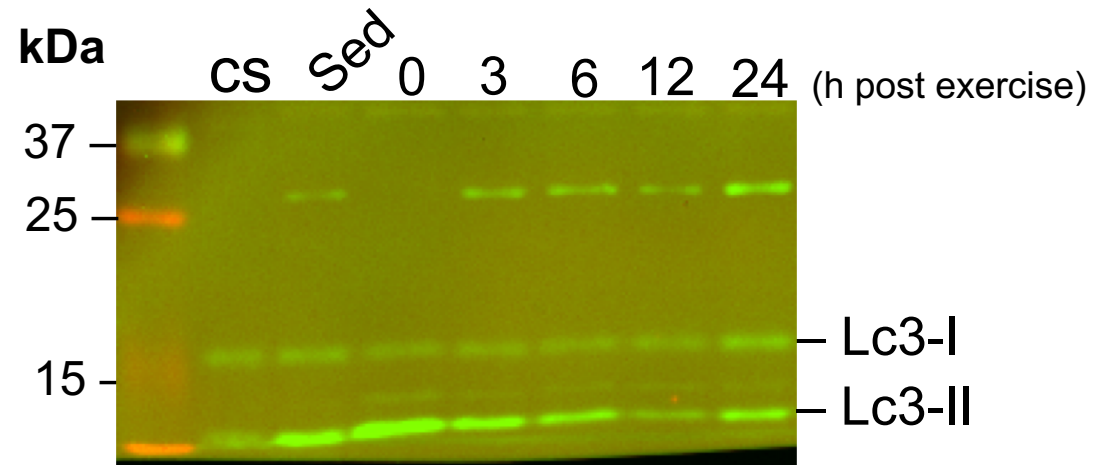


Antibody: Lc3
Vendor: CST
Product #: 4108
Dilution: 1:1000
Species: Rabbit
Mol Wght: 14, 16 kDa
Image: Mouse GA mito lysate, post-exercise time-course



LC3

Company: Cell Signaling Technology
Predicted size: 17, 19 kDa
Performer: Mei Zhang

Cat#: 4108S
Dilution: 1:1000
Notebook: Mei's #17 p13

Host: Rabbit SDS page : 15%
Location: Yan Lab -20 Freezer Box # 90
Special note: GA muscle homogenate

